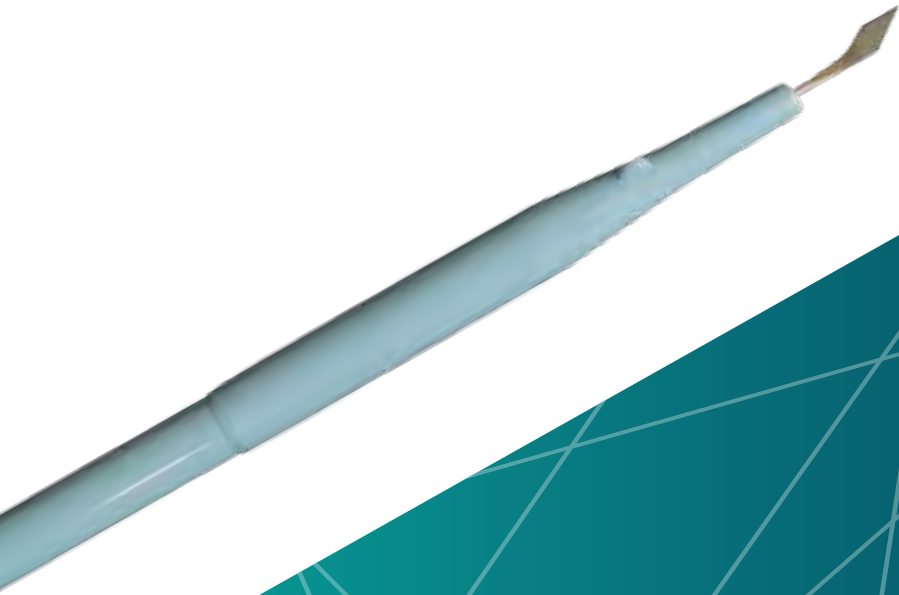


BIO-BLADES

Ophthalmic Surgical Blades



biotech

VISIONCARE

BIO-BLADES

Ophthalmic Surgical Blades



Excellent sharpness and consistency

Accurate dimensions

Enables smooth & uniform incisions

Matt finished tip

Colour coding

LANCE TIP

BIO-BLADES Lance tip knives are designed to create precise, consistent and fluid tight incisions, and are available in different sizes.



MODEL	PROFILE DEGREE
B0701502	15.0°
B0702202	22.5°
B0703002	30.0°
B0704502	45.0°

CRESCENT

BIO-BLADES Crescent knives have straight side and round tip. They are ideal for scleral tunnel flaps.



MODEL	WIDTH OF BLADE	BENDING ANGLE OF BLADE	DESCRIPTION
B0782222	2.2 mm	45°	Bevel Up
B0782622	2.6 mm		Bevel Down
B0782232	2.2 mm		
B0782632	2.6 mm		
B0782612	2.6 mm	-	Straight Blade

KERATOME

BIO-BLADES Keratome knives are designed for corneosclera centesis incisions during cataract surgery. They are available in wide range of sizes for the exact incision as per your choice of Phaco tip.



MODEL	WIDTH OF BLADE	DESCRIPTION	BENDING ANGLE OF BLADE
B0751422	1.4 mm	Single Bevel	45°
B0751522	1.6 mm		
B0751822	1.8 mm		
B0752022	2.0 mm		
B0752222	2.2 mm		
B0752422	2.4 mm		
B0752622	2.65 mm		
B0752822	2.8 mm		
B0753022	3.0 mm		
B0753222	3.2 mm		

KERATOME DOUBLE BEVEL

BIO-BLADES Keratome double bevel knives are used for sclerocornea centesis incisions during cataract surgery. They are available in wide range of sizes for the exact incision as per your choice of Phaco tip and operating access.



MODEL	WIDTH OF BLADE	DESCRIPTION	BENDING ANGLE OF BLADE
B0751442	1.4 mm	Double Bevel	45°
B0751642	1.6 mm		
B0751842	1.8 mm		
B0752042	2.0 mm		
B0752242	2.2 mm		
B0752442	2.4 mm		
B0752642	2.65 mm		
B0752842	2.8 mm		
B0753042	3.0 mm		
B0753242	3.2 mm		

M V R

BIO-BLADES MVR knives are specially designed for very precise vitrectomy surgery. These are used for centesis incision into the sclera during vitreous body surgery. MVR knives are very precise and are used to create side ports during cataract surgery.

M V R S T R A I G H T



MODEL	WIDTH OF BLADE	DESCRIPTION
B0701912	1.4 mm	MVR 19 Gauge Blade straight
B0702012	1.2 mm	MVR 20 Gauge Blade straight
B0702312	1.0 mm	MVR 23 Gauge Blade straight
B0702412	0.8 mm	MVR 24 Gauge Blade straight
B0702512	0.6 mm	MVR 25 Gauge Blade straight

M V R A N G L E



MODEL	WIDTH OF BLADE	DESCRIPTION	BENDING ANGLE OF BLADE
B0701942	1.4 mm	MVR 19 Gauge Blade Angle	45°
B0702042	1.2 mm	MVR 20 Gauge Blade Angle	
B0702342	1.0 mm	MVR 23 Gauge Blade Angle	
B0702442	0.8 mm	MVR 24 Gauge Blade Angle	
B0702542	0.6 mm	MVR 25 Gauge Blade Angle	

C L E A R C O R N E A

BIO-BLADES Clear cornea ultra-sharp blades are perfectly suitable for clear cornea incisions. New geometry of these knives allows high manoeuvrability for crafting the phaco self-sealing corneal tunnel. It creates a self-sealing intrastromal tunnel



MODEL	WIDTH OF BLADE	DESCRIPTION	BENDING ANGLE OF BLADE
B0761462	1.4 mm	Single Bevel	45°
B0761662	1.6 mm		
B0761862	1.8 mm		
B0762062	2.0 mm		
B0762262	2.2 mm		
B0762462	2.4 mm		
B0762662	2.65 mm		
B0762862	2.8 mm		
B0763062	3.0 mm		
B0763262	3.2 mm		
B0761472	1.4 mm	Double Bevel	45°
B0761672	1.6 mm		
B0761872	1.8 mm		
B0762072	2.0 mm		
B0762272	2.2 mm		
B0762472	2.4 mm		
B0762672	2.65 mm		
B0762872	2.8 mm		
B0763072	3.0 mm		
B0763272	3.2 mm		

B L U N T T I P K E R A T O M E

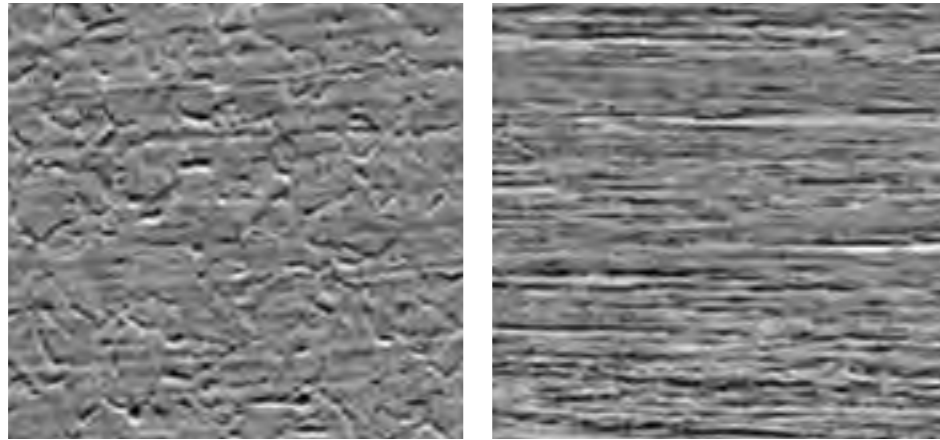
BIO-BLADES implant knives are used to widen the incision wound opening for implantation of an intraocular lens.



MODEL	WIDTH OF BLADE	DESCRIPTION	BENDING ANGLE OF BLADE
B0775222	5.2 mm	Extension Slit Knife 52	45°
B0775522	5.5 mm	Extension Slit Knife 55	

BASIC MATERIAL

Biotech, uses a specially processed, highly purified, special stainless steel to make the blades which is hard and break resistant, which is superior than single vacuum melt stainless steel blades.



COMPETITOR SS MATERIAL BIOBLADES SS MATERIAL

HEAT TREATMENT

A special heat treatment & tempering is done. The below picture shows the result of bending strength of BIO-BLADES (right) compared with an equivalent thickness of COMPETITOR steel (left).



COMPETITOR

BIOBLADES

ADVANTAGES OF ELECTROPOLISHING

- Improved corrosion resistance
- Reduced product adhesion & ease of cleaning
- Replacement for mechanical finishing

300X ZOOM



KNIFE CUTTING EDGE BEFORE ELECTROPOLISHING



KNIFE CUTTING EDGE AFTER ELECTROPOLISHING

CUTTING COMPARISON

Achieve tight sealing incisions for chamber balance with BIO-BLADES double bevel knives.



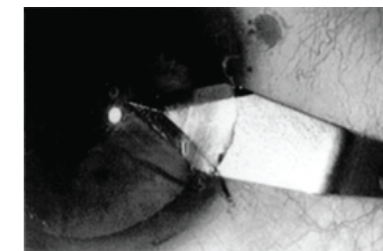
COMPETITOR



BIOBLADES



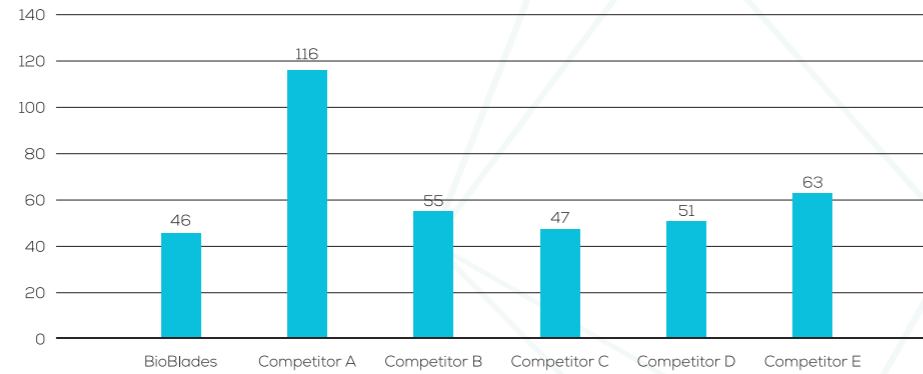
COMPETITOR



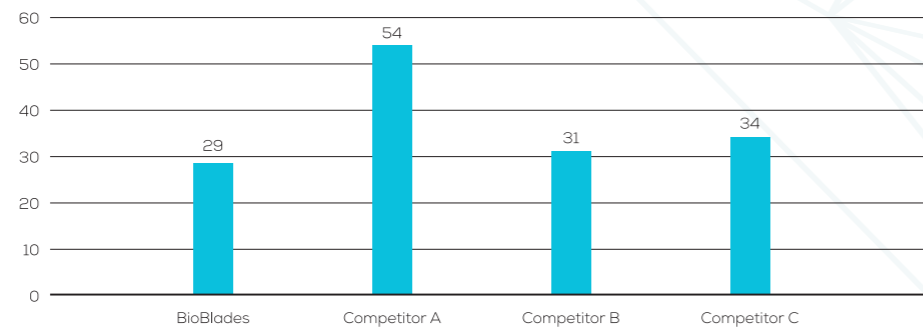
BIOBLADES

PERFORMANCE COMPARISON

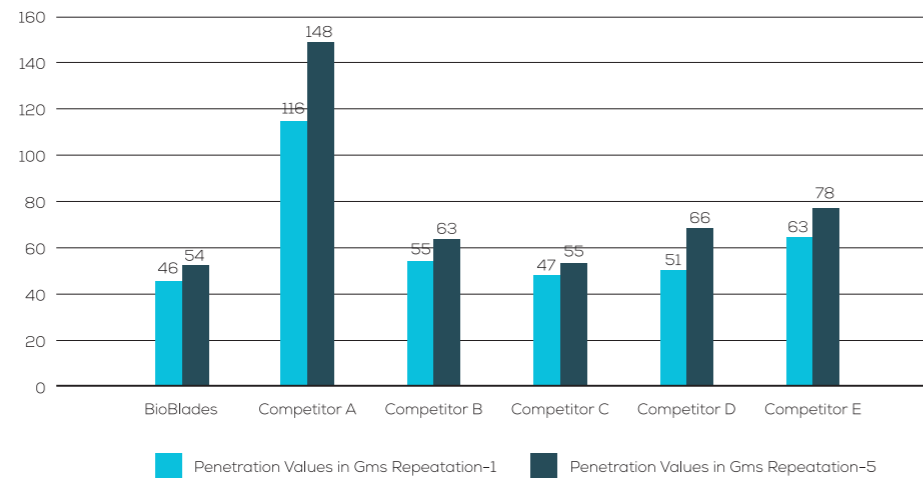
Penetration Values
in Gms for Clear cornea
2.8 mm Blade SB



Penetration Values
in Gms for Lance tip
(Side Port) 15 DEG



Penetration Values
in Gms for Clear cornea
2.8 mm Blade SB



ADVANTAGES OF **BIO-BLADES**

Ophthalmic Surgical Blades

Exact sharpness & consistency

High performance

High repeatability

Supports in minimizing incision induced astigmatism

Decreases wound healing time

Achieves tight sealing incisions for chamber balance

Improved micro finish

Improved corrosion resistance

Meets patient performance demand



BIOTECH VISION CARE PVT. LTD. | Block 1, Abhishree Corporate Park, Opp. Swagat Bunglow BRTS Stop
Bopal - Ambli Road, Ahmedabad - 380 058 Gujarat India | Tel: +91 79 66823000

Email: Domestic: indiasales@biotechhealthcare.com | International: intlsales@biotechhealthcare.com | www.biotechhealthcare.com